

Berkeley Public Library



Community Assessment of Unmet Library Needs Southwest Berkeley

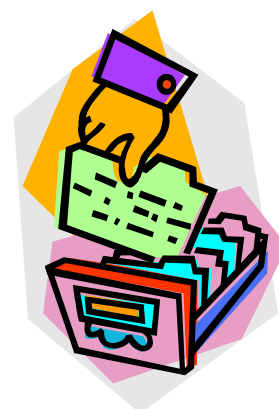
What

A community assessment that defines the unmet library needs and provides recommendations for library services in underserved areas of Southwest Berkeley.

Why

To gather detailed information on existing library services and the types of services people would like to have access to in their community.

To develop multiple recommendations on how the Berkeley Public Library can meet the library needs of the Southwest Berkeley community.



When

The assessment will take begin in September 2007, with a final report of the assessment process and recommendations available to the public by the end of the year.

How & Who

The assessment will be completed in two phases.

Phase One will develop a detailed picture of the library needs of the areas of Southwest Berkeley with little library usage. This will include community surveys (phone, paper and online), focus groups and maps of current library resources. This data will be used to develop recommendations to meet the identified needs.



Phase Two will take the recommendations back out to the community for feedback and suggestions. This will include a community meeting, focus groups, and interviews of key community leaders.

A final report will summarize the community feedback and suggestions, and make multiple recommendations for Berkeley Public Library to consider.



Community Assessment of Unmet Library Needs in Southwest Berkeley

I would like to be contacted to participate in this assessment.

My phone number is: _____

or my email is: _____

Are there specific community groups (neighborhood associations, advocacy groups, religious groups) we should contact as part of the assessment?

Group Name	Contact Name	Contact Info (phone or email)



Community Assessment of Unmet Library Needs in Southwest Berkeley

I would like to be contacted to participate in this assessment.

My phone number is: _____

or my email is: _____

Are there specific community groups (neighborhood associations, advocacy groups, religious groups) we should contact as part of the assessment?

Group Name	Contact Name	Contact Info (phone or email)

